

Sheet #
5
of 11

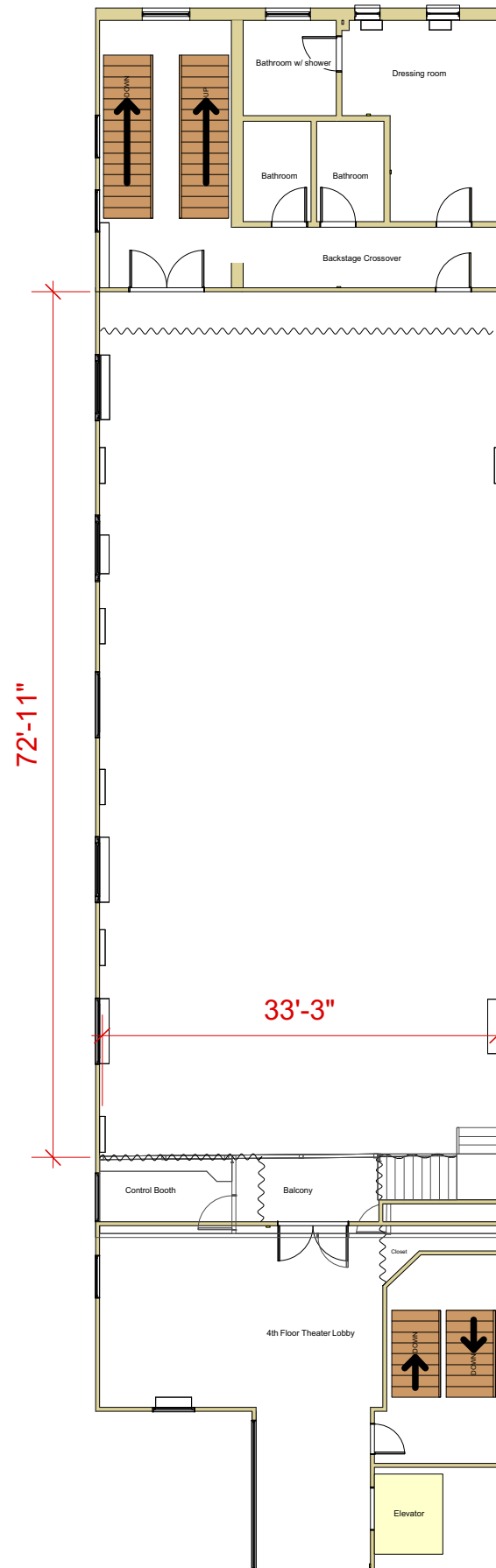
NEIGHBORHOOD
HOUSE

4th Floor Theater Plan

Rep Seating for 110

Drawn by:
David Todaro

Revision date:
11/21/17



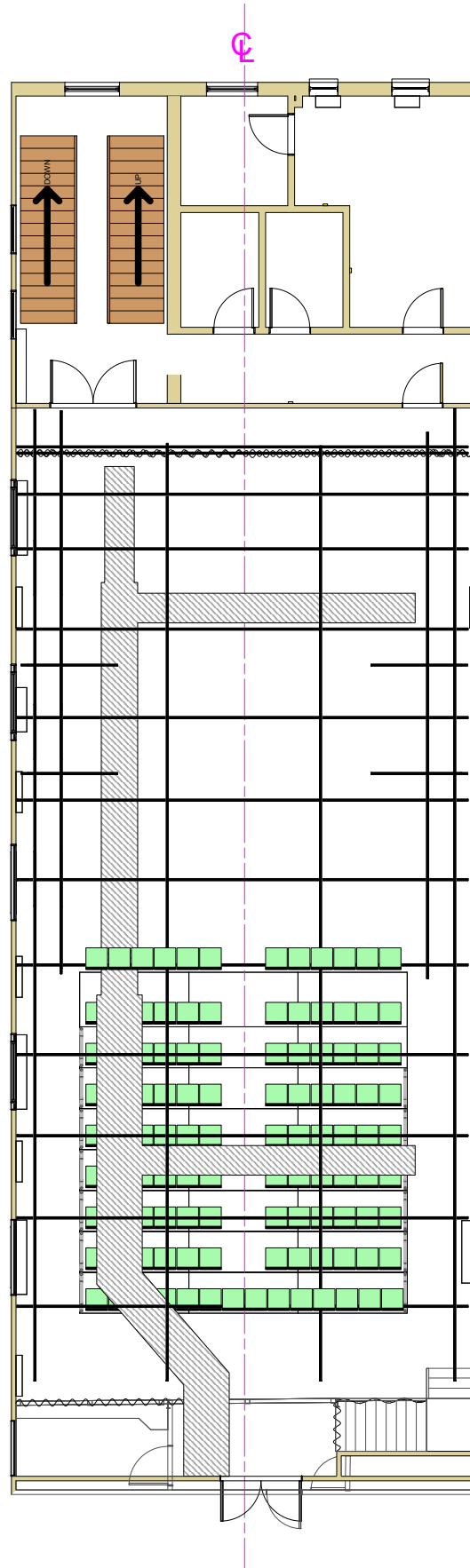
4th Floor Theater

Plan with Grid

Rep Seating for 110

Drawn by:
David Todaro

Revision date:
11/21/17



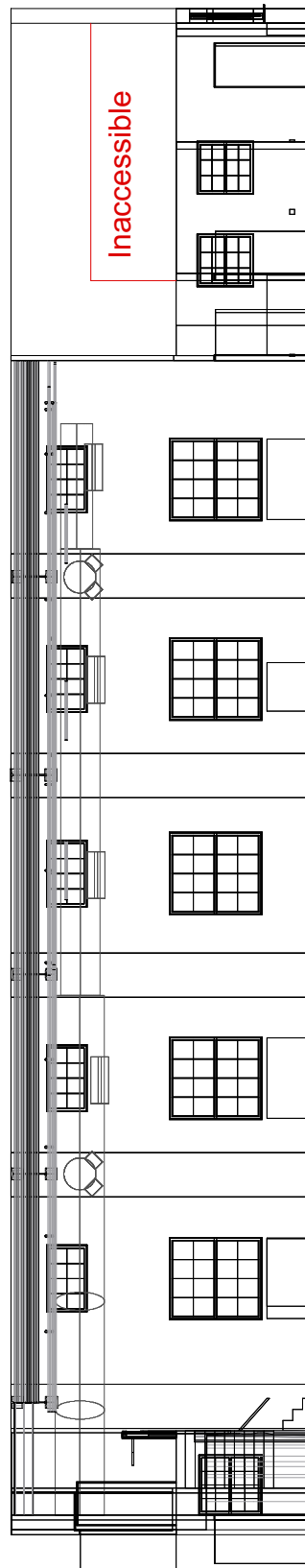
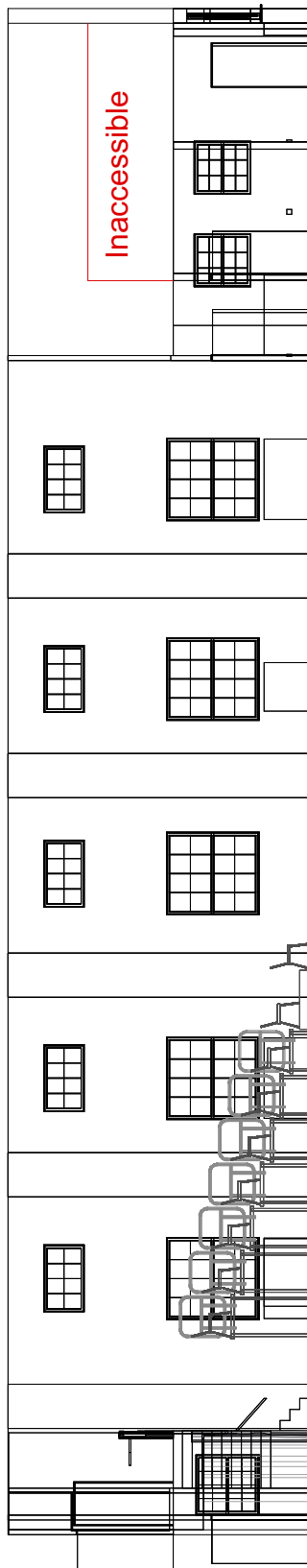
4th Floor Theater

Section

Rep Seating for 110

Drawn by:
David Todaro

Revision date:
11/21/17



Measurements from center
of room:

Grid: 17' - 8 1/2"

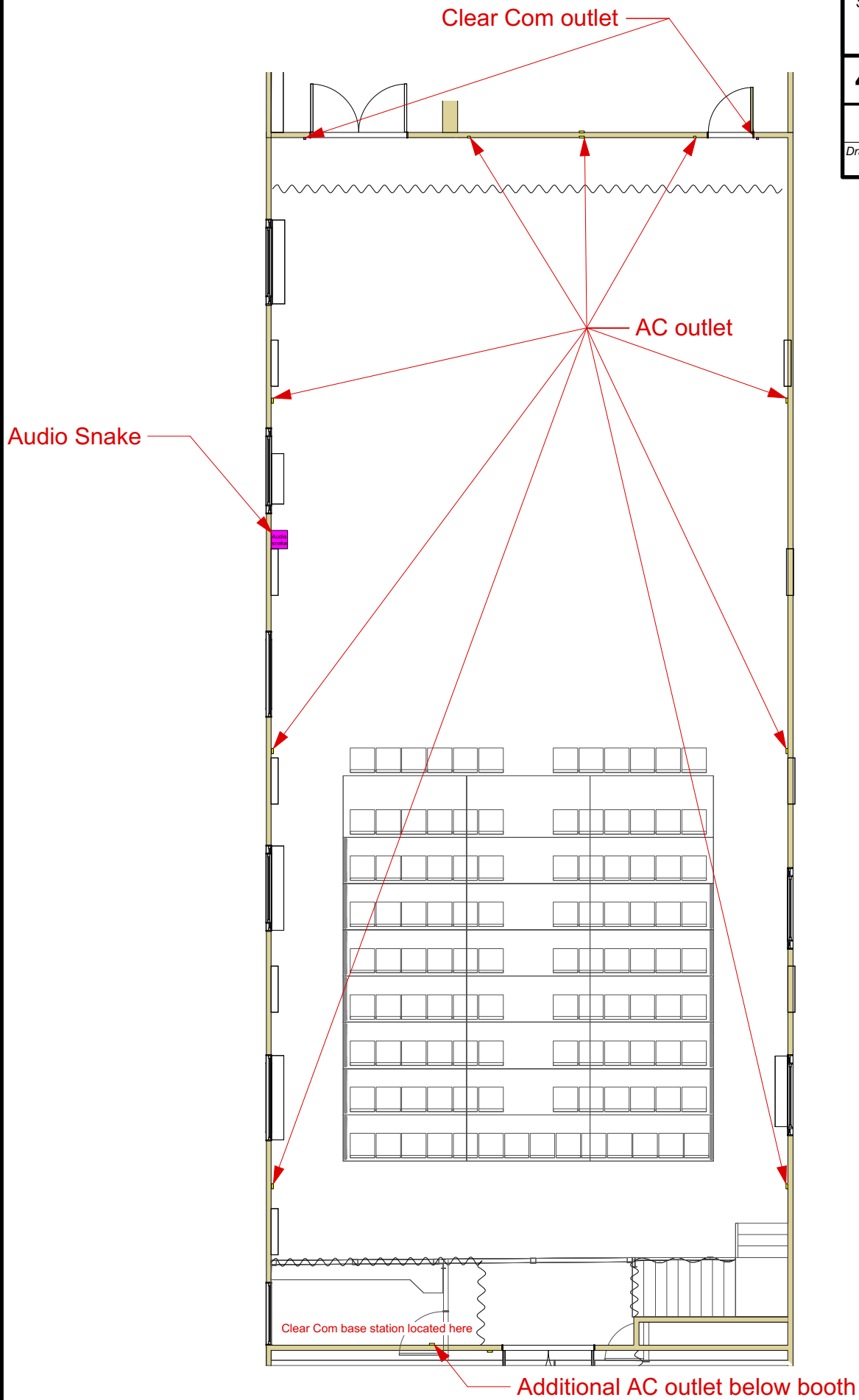
Junior Beams: 17' - 9 3/4"

Senior Beams: 18' - 7 1/4"

Ceiling: 20' - 5 1/2"

HVAC height at lowest:
14' - 1"

Note- Grid and ceiling
slopes slightly with highest
point at northwest corner
and lowest point at
southeast corner.

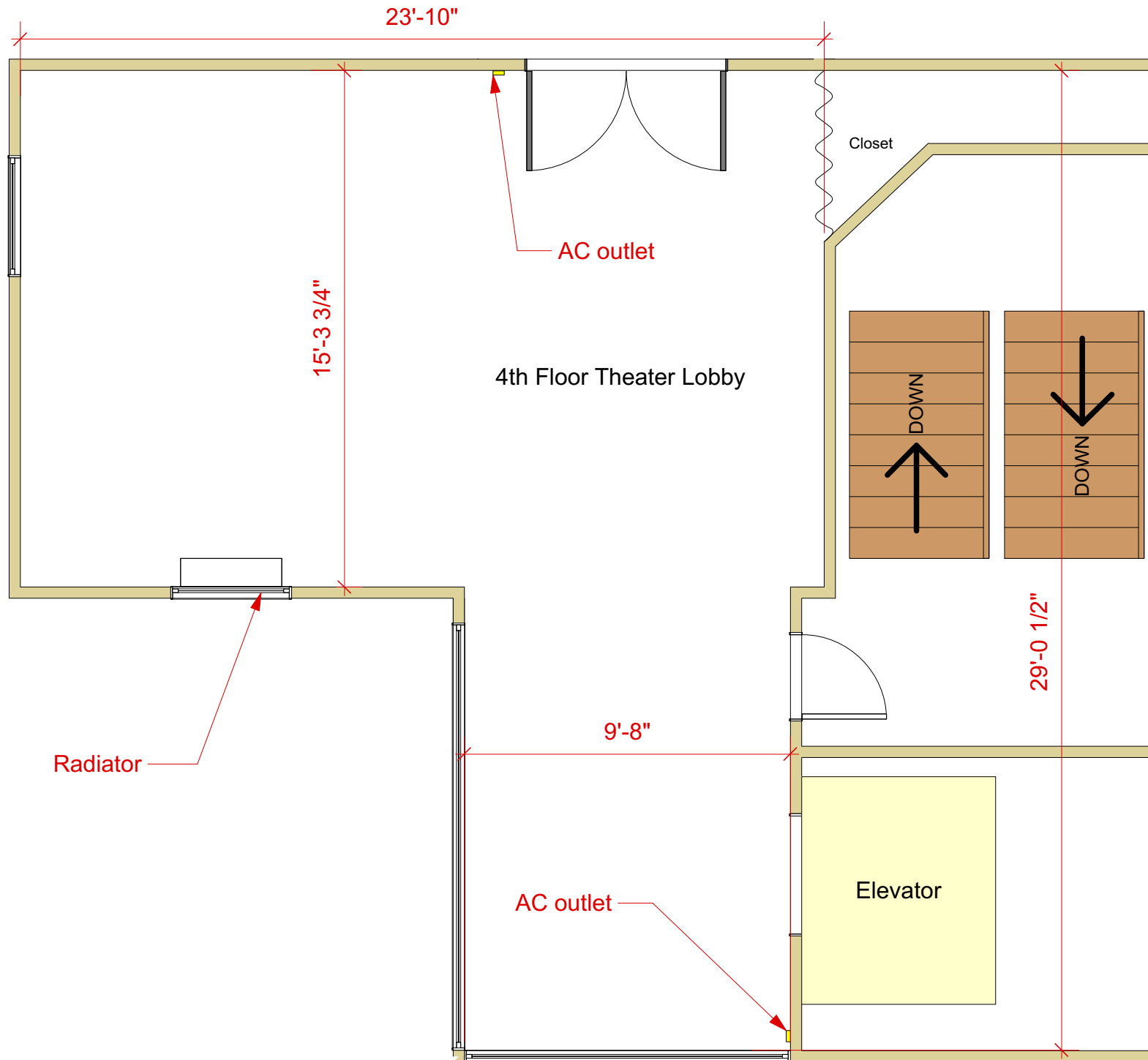


4th Floor Theater

Lobby detail

Drawn by:
David Todaro

Revision date:
11/21/17

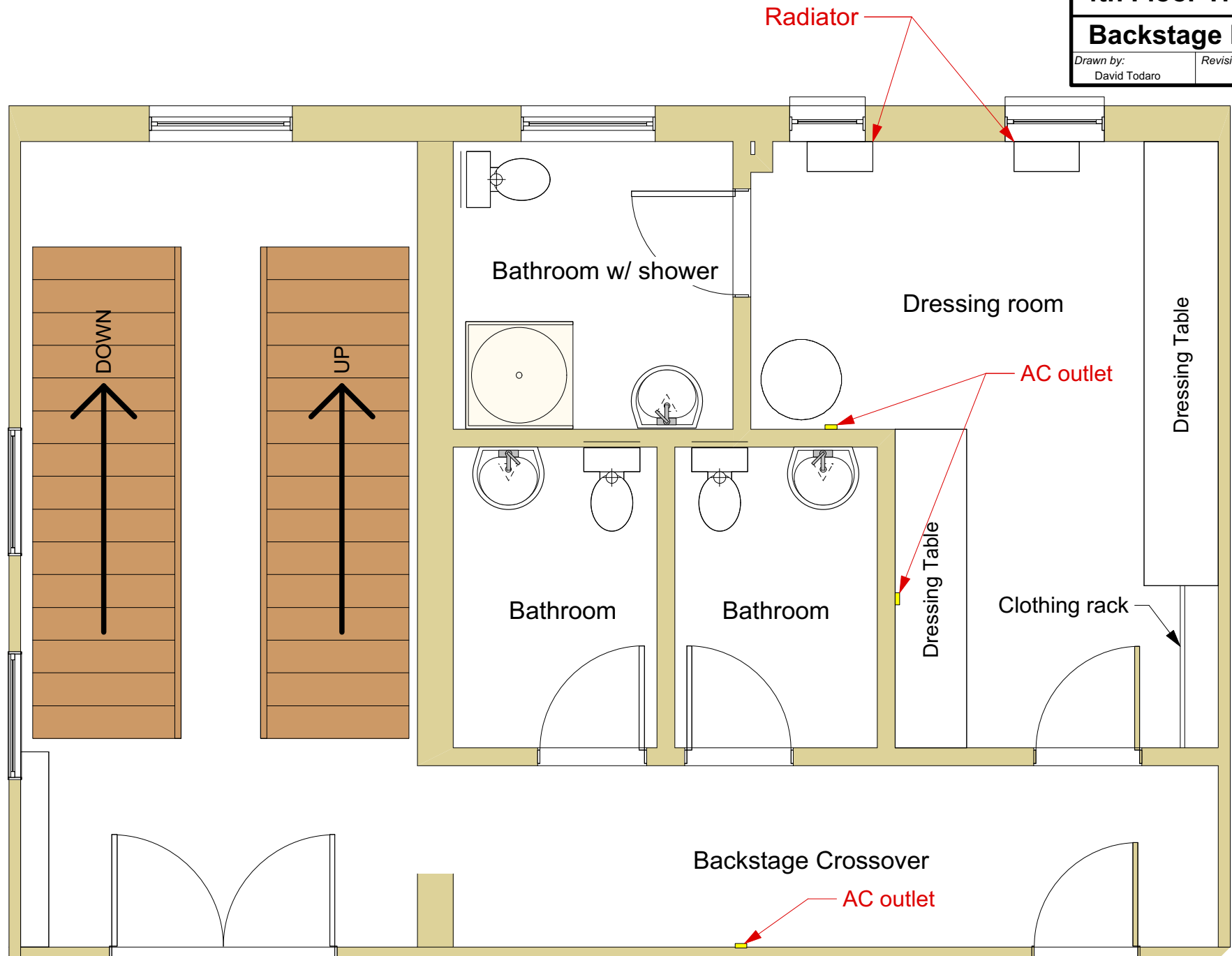


4th Floor Theater

Backstage Detail

Drawn by:
David Todaro

Revision date:
11/21/17



4th Floor Theater

Floor Area

Rep Seating for 110

Drawn by:
David Todaro

Revision date:
11/21/17

